



# OUTBACK TOWN ENDLESS HORIZONS

HUGHENDEN | PRAIRIE | TORRENS CREEK | STAMFORD

VISIT HUGHENDEN  
OFFICIAL GUIDE



## HUGHENDEN

OUTBACK TOWN, ENDLESS HORIZONS





# HUGHENDEN

## WELCOME TO THE FLINDERS SHIRE REGION

Experience natural wonders, incredible scenery, art, culture and our prehistoric past. Top it off with a warm and friendly welcome. On your journey through North West Queensland, along the banks of Queensland's longest river, the Flinders, you will delight in the discovery that is the Hughenden region. A place where horizons stretch further, history feels closer, and there's something to uncover around every corner. Pull up the handbrake and stay awhile.

## SHARE YOUR ENDLESS ADVENTURES

Tag us on your adventures!  
#VisitHughenden @VisitHughenden



Flinders Shire Council would like to acknowledge the Yirendali people as Traditional Owners and the oldest living culture of the land on which our Council operates.

We pay respects to all First Nations people and acknowledge Elders past, present and emerging.

### FLINDERS DISCOVERY CENTRE

37 Gray Street,  
Hughenden QLD 4821  
T: (07) 4741 2970  
E: [info@flinders.qld.gov.au](mailto:info@flinders.qld.gov.au)

### FLINDERS SHIRE COUNCIL

34 Gray Street,  
Hughenden QLD 4821  
T: (07) 4741 2900  
E: [flinders@flinders.qld.gov.au](mailto:flinders@flinders.qld.gov.au)

## CONTENTS

Endless Fun.....	4	Endless Culture.....	18
Endless Charm.....	6	Endless History.....	19
Around the Region.....	7	Endless Experience.....	20
National Parks.....	8	Country Hospitality.....	21
Endless Discovery.....	11	Have Questions?.....	23
Three Days in the Hughenden Region.....	15		



## START YOUR JOURNEY BY...

### ROAD

Driving is the most common choice for travellers, as it allows visitors more flexibility and accessibility to see all attractions and experiences the region has to offer. Hughenden can be reached easily by several major roads. South to Winton and Muttaborra, east to Townsville, west to Mount Isa and north to Cairns. Most of these roads are fully sealed highways. Remember when travelling throughout the Shire to check road conditions prior to departure. For most current road conditions please visit [www.qldtraffic.qld.gov.au](http://www.qldtraffic.qld.gov.au) or phone 13 19 40.

### BUS

Bus services run between Townsville and Mount Isa with a break in Hughenden on Monday, Tuesday, Wednesday, Friday, Saturday and Sunday. Bookings can be made at [www.greyhound.com.au](http://www.greyhound.com.au)

### AIR

Quick and easy! Every Monday, Wednesday and Friday, Rex Airlines flies from Townsville to Mount Isa and return with stopovers in Hughenden. Booking can be made at [www.rex.com.au](http://www.rex.com.au)

### RAIL

Queensland Rail operates the Inlander passenger train, which gives travellers the opportunity to experience the heritage and natural treasures of north Queensland's rugged yet beautiful inland. The service travels two times per week, from Townsville to Mount Isa on Wednesday and Saturday, and Mount Isa to Townsville on Friday and Monday with stops in Hughenden included. Bookings can be made at Travel Train on 1800 872 467, or online at [www.queenslandrailtravel.com.au](http://www.queenslandrailtravel.com.au)



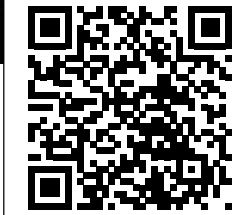
# OUTBACK TOWN ENDLESS FUN!

## FESTIVAL OF OUTBACK SKIES

The Hughenden Festival of Outback Skies is an unmissable 3-day festival, held on the May Day long weekend, that embraces the essence of the outback. It features live music, art workshops, food markets and cooking demonstrations, bull ride events, dinner under the stars and much, much more. With the expansive outback skies as the backdrop, the festival offers experiences that are only possible in Outback Queensland.



## MORE ENDLESS FUN AROUND HUGHENDEN



SCAN THE QR  
CODE FOR MORE  
INFORMATION

### COUNTRY MUSIC FESTIVAL

The annual Hughenden Country Music Festival has been held for over 30 years, featuring talented musicians of all ages in vocal and instrumental categories. From humble beginnings starting out in a galvanised iron shed at the Hughenden Showgrounds, today the festival calls the wonderful, air-conditioned Diggers Entertainment Centre home for three days of Country Music celebration.

### MONTHLY MARKETS

Held monthly during tourist season, the Hughenden Country Music Markets are the perfect place to find various homemade wares, skincare products, jewellery and food. You can also pick up local honey, homegrown plants, or a bite to eat and drink! These markets help the volunteer run Country Music Association deliver their Annual Country Music Festival each year.

### HUGHENDEN SHOW

With a rich history dating back over 140 years, the Hughenden Show offers three days of fun and competition with cattle judging, horse events, trade displays, arts and craft pavilion, live music, and fireworks!

### RUGBY 7s

The annual Rugby 7s competition attracts teams from across North Queensland to compete in a social rugby union competition in Hughenden. It is open to all communities wanting to compete in a social rugby union competition in Hughenden, north Queensland. Get a group of mates together and road trip to Hughenden for an action-packed weekend of rugby and parties. No experience is required, just people willing to have a bit of fun and you never know, your team could be leaving with the trophy!

### CAMPDRAFTS

The Flinders Shire community loves their equine sports, with the Flinders Classic Challenge and Campdraft being held each July and the Hughenden Campdraft being held each August. These unique sporting events bring the outback community together and spectators are more than welcome.

### ST FRANCIS SCHOOL FETE

St Francis Catholic School Fete is an annual event boasting raffles, entertainment, stalls, kids activities and more! Held each October, why not try your hand at winning a ham and enjoy the hospitality of an old fashioned fete.

### HORSE RACES

If you are interested in horse racing, then you have come to the right place! Hughenden Jockey Club runs two race meets each year in May and July. Let your hair down and join the revelry and fashion of the meet. Annual races are also held in Kooroorinya (May), Stamford (July) and Prairie (August) and are the highlight of social calendars.

### GOLF ANNUAL COMP

Take to the fairway at the Hughenden Annual Business Golf Challenge held each year in May, and the Annual 36 Hole Competition held in June. Hosted by Hughenden Golf Club, it's a wonderful opportunity to get a group together and join in the fun to take home the trophy!

### BOWLS ANNUAL COMP

Hughenden Bowls Club is host to the Flinders Annual Bowls Club Invitational, held over Father's Day weekend each year. Taking place over three days, the invitational is an event that should be part of your annual calendar!



# OUTBACK TOWN ENDLESS CHARM

**With its wide-open spaces, slower paces and memorable places, Hughenden is home to a history dating back over 100 million years.**

Situated on the edge of the Eromanga Sea, a vast prehistoric inland sea, Hughenden was once home to many terrestrial dinosaurs and marine reptiles. The first fossil discovered was found in 1865 and to date more than 3,000 fossil specimens from the Cretaceous period have been found in the area.

The Yirendali people have called this area home for many thousands of years, thriving from the rich water source of Towerhill Creek and associated 'reaches'.

Eventually, explorers William Landsborough and Frederick Walker came across the vast open grasslands and harsh basalt country in 1861-62. With the first settlement in Hughenden on 1863, the establishment of Hughenden as a township did not take place until 1876 when then owner of Hughenden Station, Robert Gray, allowed a friend by the name of William Mark to build a hotel at the station to cater for travellers passing through to the Cloncurry mining area. Within a year, a store, blacksmith and butcher shop had been erected. Hughenden continued to grow from this point, becoming an important railhead for the Great Northern Railway.

You can find relics of this time dotted around the township. A Coolabah tree, blazed by the explorers, is located on the right after passing through the causeway on your way to the Hughenden Showground, and is marked with a cement sculpture of a surveyor's peg adorned with four brass plaques representing historical figures and events of the area.

We're a community with a rich history and abundant prospects. The region has been named Queensland's Renewable Energy Hub, with wind farm and power infrastructure projects on the horizon. In addition, the ongoing development of water infrastructure, horticulture, and roads and transport services are just some of the ways we're securing our future as a place to invest, live and explore.



# AROUND THE REGION

## PRAIRIE

Surrounded by beautiful rolling plains, Prairie is located 30 minutes to the east of Hughenden. Prairie was originally a main horse change centre for Cobb & Co Coaches in the 1870s. Whether you're dropping by for the annual races or passing through on your way to Kooroorinya Nature Reserve, Prairie is a great place to stretch your legs, and spend some time. Check out the unique collection of stockman's hats and other historical memorabilia at the Prairie Hotel while you treat yourself to a cold beverage. After a sweet treat? Drop into the roadside 'Prairie Honey' stall to pick up some locally made honey!



## TORRENS CREEK

Located 88 km east of Hughenden, the township of Torrens Creek is rich in history. During war time Torrens Creek was converted into an ammunition dump for our armed forces during World War II... until it nearly blew up the town! The Oasis Exchange Hotel offers great meals, cold drinks and even boasts a graffiti gallery with visitors invited to leave their own personal mark. Explore Torrens Creek to discover a number of hidden mural artworks dotted within the riverbed and is a base to discover the untouched White Mountains. Drop into the pub to find out more information.



## STAMFORD

Situated on the Kennedy Development Road between Hughenden and Winton, also known as the 'Dinosaur Way', Stamford was once a busy stop for wool graziers and Cobb & Co alike. Once a year, Stamford comes alive with the annual races held the first weekend in July. Many people travel to take in the unique outback horse racing experience, the charm and excitement of a real country race meeting. The current population of Stamford is 1, however many graziers on surrounding properties still visit Stamford for social occasions at the Sports Club! Very close to the township of Stamford is the geographical point whereby water either flows north to the Gulf of Carpentaria, or south to the Lake Eyre Basin!





# OUTBACK TOWN ENDLESS FRESH AIR!

## PORCUPINE GORGE NATIONAL PARK



The jewel in the region's landscape crown is undoubtedly Porcupine Gorge. Standing out from its arid surrounds this spectacular canyon reveals layers of basalt and coloured sandstones, flowing creeks, towering cliffs, and dense vegetation. 500 million years in the making, this must-see attraction is easily accessed by sealed roads, approximately one hour drive north of Hughenden.

Covering an area of 5,410 ha, Porcupine Gorge National Park extends for more than 25km along Porcupine Creek and includes surrounding open woodland and grassland.

The gorge can be appreciated from two distinct areas. The first point is a lookout giving a view deep into the gorge below with no access to the base of the gorge from this point. The second is

the Pyramid Camping Area within the National Park. From here, a walking track takes visitors to the base of the gorge where in a wider section of the gorge, the eroding action of the creek has also created the one of the world's only natural pyramids, an isolated monolith of multicoloured sandstone rising from the floor of the gorge. For those unable to access the base of the gorge, the Rim Walk offers a more accessible option for visitors to stroll through the open woodland to the Pyramid Lookout.

The gorge is an ideal location for viewing wildlife, especially birds, wallaroos and red kangaroos. Intermittent water holes line the base of the gorge and offer a perfect place for a quick dip or cooling swim. Camping sites can be either booked online or by phone through Queensland National Parks.

Porcupine Gorge National Park and the surrounding area are a rich cultural landscape, with three traditional Aboriginal groups (the Gutjal, Yirendali and Mitjumba) continuing to maintain traditional connections to country within the park.



## MOUNT WALKER



If you're looking for the perfect spot to catch a famous outback sunset then you only need to travel 10km south of Hughenden to Mt Walker. With sensational 360° views of Hughenden and surrounds from six lookout points, you'll get to experience some of the best views available in the Queensland outback. Named by explorer William Landsborough after Frederick Walker, Mt Walker is approximately 478m above sea level, making it approximately 152m above the township of Hughenden. The famous Hughenden sunsets are best enjoyed at the Sunset lookout (check at the Flinders Discovery Centre for sunset times), a perfect spot for a picnic while watching the sun slip behind the horizon spilling colours of the rainbow into the sky all year round. Although the road is fully sealed, apart from the top of the mountain which is dirt, it is not recommended for large motorhomes, buses or vehicles towing due to the steep incline.

## KOOROORINYA FALLS NATURE RESERVE



One of the region's best kept secrets is Kooroorinya Falls Nature Reserve, located 54km south of Prairie on the Prairie-Muttaborra Road. Tower Creek runs through the reserve, which after rain can create an impressive waterfall into a rocky gorge. After the wet season a chain of permanent billabongs remain and provides an excellent spot

for swimming, relaxing by the banks with a good book, or fishing for yellow belly, black bream or red claw. The reserve is abound with wildlife, both bird and animal, and those good with a camera can get some wonderful pictures. Dogs are welcome at the Kooroorinya Falls Nature Reserve.

## WHITE MOUNTAIN NATIONAL PARK



**Recommended for experienced 4WD enthusiasts and hikers only.** White Mountain National Park is characterised by white sandstone formations and complex gorge systems that cover 112,000 ha of rugged terrain, with an additional 12,000 ha of resource reserve. For much of the year this vast area is an arid landscape but during the wet season it becomes a water catchment for streams and rivers which eventually feed into Lake Eyre in South Australia, and the Gulf of Carpentaria. Encompassing a total of 14 different ecosystems within the Desert Uplands Bioregion, White Mountain National Park is one of inland Queensland's most botanically diverse parks. Lancewood forests, open woodlands, laterite pastures, heathlands and spinifex grasslands are found around the white sandstone outcrops, while white sand dunes and sandy flats occur in the Canns Camp area. Brilliant wildflowers and a host of animals can be spotted throughout the park.

**LOCAL TIP!** Take a drive to 'Sawpit Gully', and experience the beauty of 'The Lost City'. The area is also accessible with mountain bikes.



## MOORRINYA NATIONAL PARK



In the heart of the Desert Uplands, Moorrinya National Park protects 18 land types in the Lake Eyre Basin, one of Australia's most important water catchments. This remote park has dry, flat plains crisscrossed by watercourses and covered in open eucalypt, paperbark and acacia woodlands and grasslands. Camping is available in a remote and undeveloped setting, with 4WD vehicles recommended to access the camping area as the tracks are rough and become impassable to conventional vehicles after rain. The park may be closed during the wet season (November to April).

## BLACKBRAES NATIONAL PARK



Accessible by 4WD only, Blackbraes National Park straddles the Einasleigh Uplands and the Gulf Plains biogeographical regions and is a must for visitors who enjoy geology, dense woodlands, or

bird watching. Located 170km north of Hughenden in basalt country, ironbark woodlands with native grasses dominate the landscape, providing food and shelter for many native animals. Grey kangaroos are common, and birdlife is abundant. Moonstone Hill Regional Park, a volcanic crater, is popular for fossicking gem-quality feldspar called 'moonstone'. Bush camping is permitted near Emu Swamp Dam and Moonstone Hill Resources Reserve, however there are no facilities and fires are only permitted in the fire rings provided, except when fire bans are in place. Firewood cannot be collected from inside the park. Fossicking in the National Park is not permitted.

## THE LAKES NATIONAL PARK



The land known as 'Lakes National Park' was purchased by the Queensland Government in 2022. Located 100km north of Hughenden, The Lakes National Park is a former grazing property covering 35,300 ha. Featuring incredible lakes, birdlife and a wide variety of flora and fauna, The Lakes National Park represents a key part of Australia's biodiversity. The lands are part of the Gudjala First Nations peoples' traditional country and play an important role in Indigenous cultural heritage management. The National Park is not currently open to the public, however, please enquire at the Flinders Discovery Centre for up to date information.

**Reminder:** Pets including dogs are not allowed in National Parks in Queensland. Local dog sitting options are available in Hughenden — check with the Flinders Discovery Centre for more information.

**Please note:** Phone reception is not available at National Parks. Please ensure you book your spot before leaving Hughenden.



# OUTBACK TOWN ENDLESS DISCOVERY

HUGHENDEN | PRAIRIE | TORRENS CREEK | STAMFORD

## VISIT HUGHENDEN OFFICIAL MAP

## OUTBACK TRAVEL TIPS

- When travelling in Queensland's outback, make sure you have plenty of fuel, water and food.
- Always check road and weather conditions before leaving.
- Always observe local road condition signs.
- Watch out for livestock and wildlife on the roads, particularly around dawn and dusk.
- If a road is accessible only by 4WD, use only a 4WD.
- Don't forget to bring a hat, sunscreen and insect repellent.
- Advise friends and family of your destination.
- Obtain good road maps and plan your route.
- Don't forget to take regular breaks to prevent fatigue.

**Drive safely and enjoy your stay in the Hughenden region.**

**Reminder:** Phone reception may be patchy - plan your trip in advance.





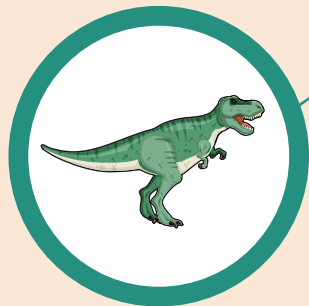
### COMET WINDMILL

Hughenden's giant 'Comet Windmill' is a sight to behold, with only 15 of these massive windmills ever made in Australia.



### FLINDERS DISCOVERY CENTRE

Flinders Discovery Centre is an accredited Visitor Information Centre with an amazing display of fossils from around the world and the local area.



### PREHISTORIC PARK

Come visit 'Mutt' the life size replica of a Muttaborrasaurus, and his prehistoric friends.

# HUGHENDEN & FLINDERS SHIRE



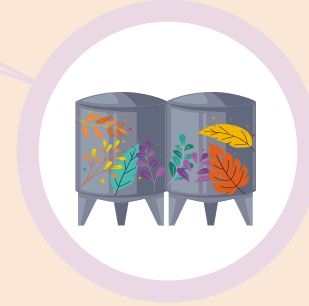
### FREE FOSSICKING SITE

Grab your fossicking equipment and head over to the Hughenden Showground to unearth your own prehistoric piece of history!



### HUGHENDEN RECREATIONAL LAKE

Hughenden Recreational Lake offers numerous experiences from water sports to picnics and even fishing!



### WATER TANK MURALS

Two of Hughenden's water tanks have been transformed into larger than life artworks making these murals a must-see when visiting the region.

### LEGEND

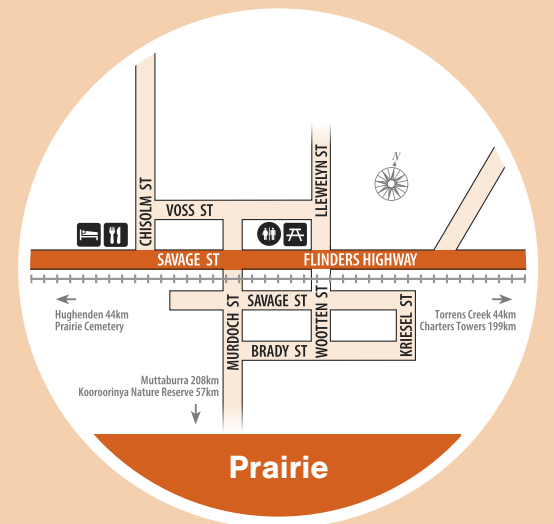
Accommodation  
Cafe/Restaurant  
Caravan Park  
Fuel  
Public Toilets



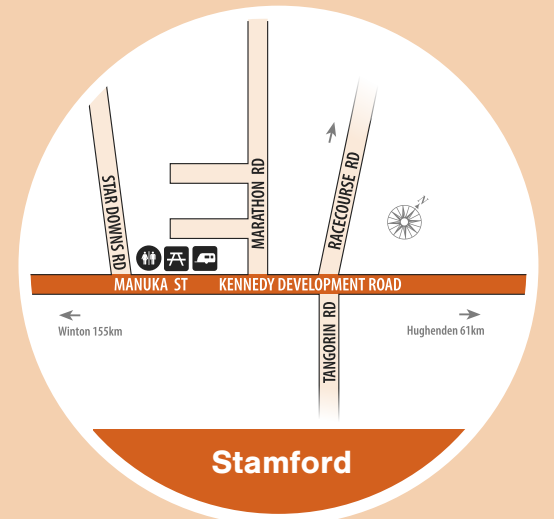
Grey Water Dump  
Potable Water  
Wash Down Bay  
Picnic Area  
Medical Assistance



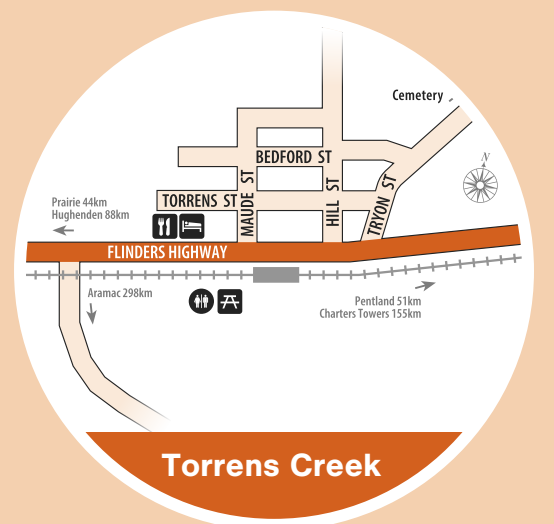
Fire Station  
ATM  
Driver Reviver  
Free Bush Camp  
River Walk



### Prairie



### Stamford



### Torrens Creek



# EXPAND YOUR JOURNEY



## ITINERARY

# 3 DAYS IN THE HUGHENDEN REGION

## 3 DAY ITINERARY

### DAY 1

Once you arrive in Hughenden, your first stop will be the Flinders Discovery Centre! The Visitor Information Centre, which underwent a \$4 million refurbishment in 2023, is your go-to for any questions you may have about the region, with all the information you need on local and regional holiday destinations.

While you're there, explore the museum and soak up the history of the area. Check out the impressive, and growing, exhibition of fossils, and say hello to Hughie, a life size replica from the original bones of the Muttaborrasaurus found in Hughenden area. You can also learn about the four bioregions of the shire and experience the magic of the museum's amazing light and sound show, taking you back over 500 million years to the formation of Porcupine Gorge! Fuel up with brunch café style at FJ Holden's Café, located in Hughenden's town centre.

Now it's time to start exploring! Pick up some freshly made sandwiches from the local cafe for a picnic lunch, because for the rest of the day, you're heading north of Hughenden to Porcupine Gorge! During the drive, keep an eye out for brown and white signs that mark the many interesting landmarks along the way. Spot everything from creeks, to fossils, and lookouts. Once you arrive

at Porcupine Gorge, you can choose your own adventure. You can fill your afternoon with bush walking around the lookout, standing atop the incredible gorge, you will truly experience the awe-inspiring beauty of its vastness. For the more adventurous, the walking track into the gorge takes you down 500 stairs to the floor of the canyon where you'll be immersed in this natural wonder. Take in the diverse range of flora and fauna that reside amongst the coloured volcanic basalt countryside and sandstone rocks, watch as a wide array of birdlife navigate the terrain, or take some time to have a swim in the flowing creek.

### OPTIONAL DETOUR

Still have some sunlight left? Just before you arrive back in Hughenden, venture out along the Basalt Byway, a 95km long 4WD track that winds through the northern landscapes of Hughenden. In the wet season, be amazed by the abundant bird life, wildflowers and flowering gums. In the drier months, the Flinders Poppy blooms, creating rivers of crimson throughout the rolling hills and wide plains. All year round you may be able to spot kangaroos, dingoes, emus, and other native creatures that call the region home! Enjoy dinner at Hughenden as the locals do at the Great Western Hotel, Royal Hotel, or Cheng's Chinese!





## DAY 2

Start your day early with a morning of fossicking before the sun sets in! Our region sits just inside what was once the great Eromanga Sea, so naturally has an abundance of fossils. The Hughenden Showground also doubles as a fossicking site, and with many dinosaur fossils found in the region, it is the perfect place to explore, and see if you can find your own to keep! Remember to take your own fossicking equipment, or simply search the grounds by hand for stones and other keepsakes.

Once you've looked for your treasures, the best way to wash the dust away is with a trip to Hughenden Recreational Lake. There is something for everyone, from kayaking, canoeing, walking tracks and fishing! For fishing enthusiasts, head to the jetty and try your luck catching one of the many fish and yabby species found within the lake. For those looking to relax, head to the park's designated beach area and enjoy a dip. Boating and water-skiing are also welcomed!

For lunch, head to one of the park's picnic areas and enjoy a BBQ with local meats from Flinders Butchery! There are plenty of picnic areas to choose from around the park with free BBQ's, shade and other amenities.

Once your bellies have settled, explore the lake on foot and walk the 2.7km walking track to find the park's waterfall and historic Coolabah tree.

After you've finished exploring the lake, head back into Hughenden and spend the afternoon familiarising yourself with the town's centre. Discover the many impressive public art and

sculptural pieces that adorn buildings and garden areas throughout the town.

See if you can tick off the full list of public art listed on page 18 of this guide!

Official guided Town Tours provide deeper insights into the region's history and biodiversity. Tours can be booked through the Flinders Discovery Centre. Finish off your afternoon of exploring Hughenden with a stroll along the Eco Walk on Flinders and take in the diverse bioregions of the Flinders Shire. Along the 1.5km of pathway you'll find species of flora and local artworks illustrating important events.

For the finale, head 10km south of Hughenden to Mount Walker for the sunset. With six spectacular lookouts offering 360° views of the region, Mount Walker is the best place to be as the sun goes down in Hughenden. If you are looking for an antipasto platter why not call into our local suppliers and grab some sundowners and nibbles to enjoy one of Australia's best sunsets.



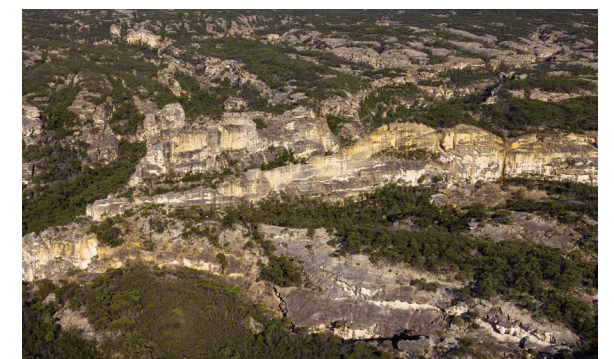
## DAY 3

In the morning, discover Porcupine Gorge and White Mountains National Park from the sky. This scenic flight is the only way to see the expansiveness of the White Mountains and rivals the Bungle Bungle Range in majestic landscapes. You won't be disappointed.

Once you are back on solid ground, head east to Prairie and enjoy an ice-cold beer, a pub feed and a chat with the locals at the iconic Prairie Hotel! The Prairie Hotel's welcoming atmosphere is well worth the trip, and a place for locals and travellers alike, boasting an iconic museum of Australian artefacts.

After lunch, 4WD enthusiasts can head west a couple of kilometres, before turning right onto the Flinders River Byway! Crossing the Flinders River, this drive offers scenic lookouts over sparse, everchanging landscapes.

For those looking to explore more of the region on foot, head 54km south of Prairie to Kooroorinya Falls Nature Reserve. One of the region's best kept secrets, this magical nature reserve located on private property is the perfect example of the pristine outback territory of North Queensland. During the wetter months of the year, you will see the reserve transform into a spectacular waterfall, while in the drier months, enjoy swimming, fishing or relaxing by one of the many billabongs that appear after the wet.





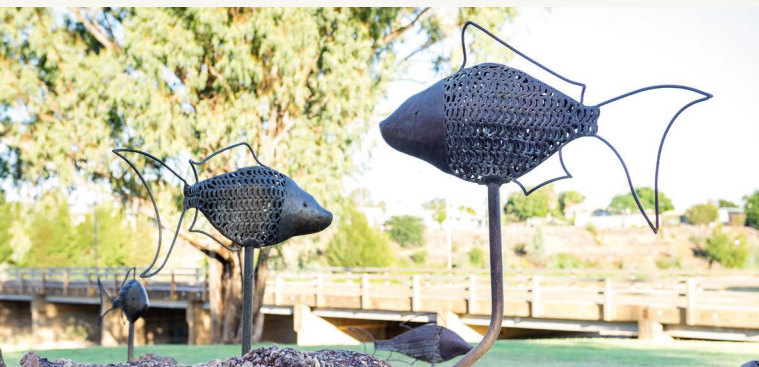
## MUST DO

Joel Fergie AKA The Zookeeper and Travis Vinson AKA DRAPL, 'Digging up the Past', 2021. Silver winner in the Best Rural Art category at the 2022 Australian Street Art Awards. The mural was created with support from Flinders Shire Council, Northern Queensland Primary Health Network and Queensland Health's TRAIC (Tackling Regional Adversity through Integrated Care) program.

# OUTBACK TOWN ENDLESS CULTURE

### Take a walk on the bright side and explore the Hughenden art trail!

Hughenden is a haven for outback artists, with ample sculpture trails to explore, larger than life silo and tank murals and even hidden street art. Make sure to take a stroll along the 'Eco Walk on Flinders' to see a series of sculpted metal fish, be amazed by the impressive Comet Windmills and the Federation Windmill Rotunda, and take an iconic photo at the two incredible water tank murals on Alyss Street and McLaren street!



## MUST SEE LIST

### Sculptures and public art

- Darby the Dinosaur – large wall sculpture depicting the Muttaborrasaurus.
- Digging up the Past – Watertank mural, McLaren Street
- Sunset Dreaming – Watertank mural, Winton Road
- Federation Rotunda – made from two 20ft Comet windmills. The 35ft Comet Windmill on the southern side of the Flinders River is another incredible sight to behold.
- Moona Nurra Rainbow Serpent, Little Avenue
- Pterosaur Dinosaur Sculpture, Gray Street
- Terry the Pterosaur, Darby the Dinosaur and Ammonite at the library.
- Flinders River Fish Sculptures – Metal fish made of scrap metal, Little Avenue.
- Ammonite Sculpture – A representation of an ammonite fossil made from windmill parts, Library.
- Murals at the skate park and public toilet blocks.

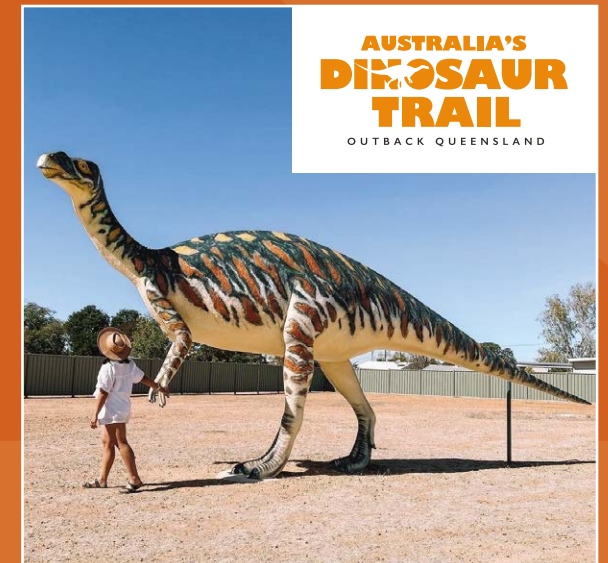


# OUTBACK TOWN ENDLESS HISTORY

Hughenden is part of the Australian Dinosaur Trail which includes our neighbouring towns of Winton and Richmond. Our history is filled with fossils from ancient seas, forests and the prehistoric creatures that stalked them. Discover a range of fossil specimens from the Cretaceous period which have been found in the Hughenden area, including Muttaborrasaurus Langdoni and the pterodactyl-like 'Queensland Pterosaur'.

Take a photo with 'Hughie', a life size skeletal replica from the original bones of a 110 million year old Muttaborrasaurus, based at the Flinders Discovery Centre, and 'Mutt', located on the corner

AUSTRALIA'S  
**DINOSAUR  
TRAIL**  
OUTBACK QUEENSLAND



of Gray Street and Stansfield Street. Located in the same park as Mutt, you will find an additional metal artwork sculpture - Terry the Pterosaur. This park was once the site of the 'Grand Hotel', however will soon be transformed into 'Prehistoric Park'. The Flinders Discovery Centre is your hub for all things dinosaurs and houses an impressive fossil collection of international standards, as well as a great light and sound show to give you an introduction to nearby Porcupine Gorge. A stroll through the streets will reveal a series of sculptures from local artists depicting fossils and dinosaurs with a touch of the outback heritage.







# OUTBACK TOWN ENDLESS EXPERIENCES

**Have a little time to smell the roses? Check out some more of our top attractions and things to do in the Hughie region!**

## **FLINDERS DISCOVERY CENTRE**

Flinders Discovery Centre is an accredited Visitor Information Centre with an impressive museum, café and expanded retail area. The centre houses an amazing display of fossils from around the world and the local area. The friendly staff can assist you in planning your itinerary while travelling in the region.

## **HUGHENDEN RECREATIONAL LAKE**

Opened in 2020, Hughenden Recreational Lake offers numerous experiences from water sports to picnics and even fishing! Take some time out of your day to visit the lake and enjoy the endless possibilities.

- Picnics and BBQs
- Relax on the beached area
- Swimming, fishing, boating and water skiing
- Watercraft activities (canoeing, kayaking, rowing)
- Shaded playground
- Circular 2.7km walking trail

## **HUGHENDEN'S COMET WINDMILL**

The giant 'Comet Windmill' in Hughenden is a sight to behold, with a scale very rarely seen in Australia. Hughenden's most impressive Comet Windmill, known as Wirrilla Mill, is located on the southern side of the Flinders River. At 10.6m tall with 35-inch blades and a diameter of 35ft, this windmill was used to pump up to 1 million litres of water a day to livestock. Only 15 of these windmills were

ever made in Australia. You won't want to miss the Federation Windmill Rotunda, constructed using two Comet windmills dated 1912 and 1916. The rotunda was commissioned as part of the Centenary of Federation Celebration in 2001.

## **CEMETERY ARTS AND SYMBOLISM TOUR**

This self-guided tour will direct you to 24 elaborate headstones adorned with different symbols to decipher the individual meanings behind them. Hughenden's cemetery dates back to 1886 and offers an array of skilfully made and carefully chosen headstones. Pick up your guide from the Flinders Discovery Centre.

## **ROBERT GRAY PARK**

Situated on the northern banks of the Flinders River, Robert Gray Park is dedicated to local characters and pioneers of the district. Facilities include free BBQs and picnic areas.

## **FLINDERS RIVER**

Extending over 1000km and flowing into the Gulf of Carpentaria, Queensland's longest river, the Flinders River, was named after Matthew Flinders by Lieutenant Stokes of HMS Beagle in 1841. Take a walk along the Eco Walk on Flinders, which follows the bank of the Flinders River and is dotted with local sculptures and artworks.



# OUTBACK TOWN ENDLESS COUNTRY HOSPITALITY

**Choosing where to get tucker on the go isn't always easy. Luckily, we know a thing or two about outback hospitality. For the best tips and popular hangouts, ask a local!**

## **ASTRON HUGHENDEN**

**6 Richmond Hill Drive, Hughenden**

For a quick feed of good food in generous sizes, the Astron Hughenden has everything the hungry traveller could want.

## **BP LIGHT ON THE HILL**

**61 Richmond Hill Drive, Hughenden**

With barista coffee, great food and weekly specials, BP Lights on the Hill is your one stop shop.

## **CHENG'S CHINESE RESTAURANT**

**31 Brodie Street, Hughenden**

Located in the heart of Hughenden's town centre and nearby the Flinders River, Cheng's Chinese Restaurant offers authentic Chinese cuisine.

## **EXCHANGE HOTEL AND TORRENS CREEK GENERAL STORE**

**Flinders Highway, Torrens Creek**

Located 88km east of Hughenden, Torrens Creek's Exchange Hotel offers all of your pub favourites. Visit the General Store next door for sandwiches, rolls and salads as well as coffee and ice creams.

## **FJ HOLDEN'S CAFÉ**

**55 Brodie Street, Hughenden**

You can't miss the bright red façade and vintage Holden ute on the sign. Open 7 days a week, the café is home to the famous FJ Super Burger and treasured collection of Holden and Elvis memorabilia.

## **FLINDERS BUTCHERY**

**29 Moran Street, Hughenden**

Locally owned and operated for 20 years, Flinders Butchery offers an award-winning selection of meats and related products.

## **FOODWORKS**

**13 Gray Street, Hughenden**

FoodWorks has all of the groceries for your trip sorted.

## **GOLDEN LAB ESPRESSO**

**2-4 Richmond Hill Drive, Hughenden**

Golden Lab Espresso serves up specialty barista coffee and an ever-changing range of homemade savoury and sweet treats from a beautiful 1980s York caravan.

## **GREAT WESTERN HOTEL**

**14 Brodie Street, Hughenden**

Located near the Flinders River in Hughenden's town centre, experience true Australian outback hospitality at the Great Western Hotel, with classic pub meals and ice-cold beverages.

## **HOLDENS BAKERY**

**28 Stansfield Street, Hughenden**

Locally owned and operated, Holdens Bakery prides themselves on fresh and quality made bakery products.

## **HUGHENDEN COFFEE LOUNGE**

**27 Brodie Street, Hughenden**

Hughenden Coffee Lounge offers a wide variety of cakes and cheesecakes, sandwiches and light meals, coffee and cold drinks.

## **HUGHENDEN SUPERMARKET**

**31 Moran Street, Hughenden**

Offering fresh produce and all your grocery needs.

## **PRAIRIE HOTEL**

**Flinders Highway, Prairie**

Located 40km east of Hughenden, the iconic Prairie Hotel serves meals in a country style dining room with outdoor seating available on a shady veranda. The front bar, dedicated to the 'Old Ringers', is a museum of unique Australian memorabilia.

## **THE ROYAL HOTEL**

**23 Moran Street, Hughenden**

The Royal Hotel offers classic pub meals and regularly updated specials. Enjoy your meal inside the dining room or outside on the deck for a change of scenery.



# OUTBACK TOWN ENDLESS COUNTRY HOSPITALITY

The stars in our night skies are definitely something to write home about, but when it's time to turn in, we know you'll appreciate the peace and quiet of the outback.

## EXCHANGE HOTEL

Flinders Highway, Torrens Creek

Phone: 0407 948 296

Located 88km east of Hughenden, the Exchange Hotel in Torrens Creek offers 8-10 powered sites, five motel rooms, seven hotel rooms, a swimming pool and a golf course.

## GREAT WESTERN HOTEL MOTEL

14 Brodie Street, Hughenden

Phone: (07) 4741 1846

The Great Western Hotel offers seven air-conditioned motel units equipped with a fridge, tea and coffee making facilities, private ensuite, television and telephones.

## HUGHENDEN ALLEN TERRY CARAVAN PARK

Resolution Street, Hughenden

Phone: (07) 4741 1190

Offers caravan and camping sites, as well as standard, ensuite, deluxe and single cabins available. Clean amenities, a laundromat, camp kitchen, BBQ areas and a vehicle wash-down bay. This caravan park is pet friendly!

## HUGHENDEN GUEST HOUSE

Flynn Street, Hughenden

Phone: 0417 094 501

A charming old 1920s Queenslander offering four rooms in total to rent. Each room is air-conditioned, and guests have access to several living areas, outdoor dining, BBQ and kitchen facilities.

## HUGHENDEN RV PARK

Stansfield Street, Hughenden

Phone: (07) 4741 2970

Located in the carpark of the Hughenden Showgrounds, the Hughenden RV Park offers free camping for fully self-contained vehicles.

## LUXURY ON ALYSS

Hughenden (Enquire for address)

This stylish two-bedroom house has all the comforts of a modern home and is located a short stroll to all amenities and recreational parks. Book via Airbnb.

## MOWBRAY COTTAGE

Mowbray Street, Hughenden

Ideally situated in Mowbray Street, Mowbray Cottage is fully self-contained and air-conditioned, and just a short stroll away from all amenities.

## PRAIRIE HOTEL

Flinders Highway, Prairie

Located 40km east of Hughenden, the Prairie Hotel has accommodation available on site.

## REST EASI MOTEL

11 Richmond Hill Drive, Hughenden

Phone: (07) 4741 1633

The Rest Easi Motel offers 15 reverse cycle air conditioned, semi self-contained units, laundry, BBQ area and room service.

## ROYAL HOTEL

23 Moran Street, Hughenden

Phone: (07) 4741 1183

The Royal Hotel has 45 ensuite motel units available, and four semi-contained units with bathrooms.

## THE TOWN HOUSE

Hughenden (Enquire for address)

A comfortable three-bedroom country cottage, with all you need for a short or long stay. There is a car port, as well as plenty of off-street parking. Includes a fully equipped kitchen, dining room, washer/dryer and large clothesline. Book via Airbnb.

# HAVE QUESTIONS?

## MOBILE NETWORK

When travelling in the Flinders Shire, the only mobile phone coverage available are the Telstra and Optus networks.

## RADIO

Stay in touch by tuning into the local radio on ABC 1485AM. Other stations available include ABC national 107.5AM, Triple J QLD 105.9FM, 4GC 756AM, SBS 104.3FM, Hot FM and FM 88.

## FUEL

There are four fuel stations in Hughenden that carry unleaded petrol, diesel and 98 octane. Astron Service Station on the Flinders Highway stocks Ad Blue and LPG.

## BOTTLE SHOP

The local bottle shop in Hughenden is located at the Great Western Hotel on Brodie Street.

## PET FRIENDLY

Your furry friends are welcome in Hughenden, however a bi-annual wild dog (1080 poison) baiting program is run by Flinders Shire. Please note, dogs are not permitted in National Parks in Queensland including Mt Walker. Daily dog boarding is available in Hughenden at the Great Artesian Vet Surgery and there is a dog-friendly caravan park available.

## PUBLIC POOL AND GYM

Hughenden Aquatic Centre in Resolution Street is unheated and closes during the winter months, usually from April through to September. The gym can be accessed by visitors via a self pay session charge at the door or if you're in Hughenden for a while call into the Council Office to chat about membership options.

## DO I NEED A 4WD?

The roads in and around Hughenden are mostly sealed and suitable for 2WD vehicles. A 4WD is recommended for some National Parks in the area and any unsealed roads when wet.

## CHURCHES

There is one church operating in Hughenden - St Thomas Anglican Church on Hardwick Street where Catholic and Anglican Services are held. Please see Flinders Discovery Centre for service times.

## WEATHER

Our outback summers are very hot, however they are a dry heat and most find this more bearable than the humidity on the coast. We do get some cracker storms during summer and road closures can occur. Our visitors are reminded to remain vigilant and be aware of conditions to ensure their safety. Road conditions can change quickly. Our 'wet season' goes from November to March.

# WEATHER STATS

## AVERAGE RAINFALL

505.1MM (19 INCHES)

## AVERAGE WINTER MINIMUM

9.6 DEGREES

## AVERAGE SUMMER MAXIMUM

35 DEGREES

SCAN THE QR  
CODE FOR MORE  
INFORMATION







# OUTBACK TOWN ENDLESS HORIZONS



**HUGHENDEN**  
OUTBACK TOWN, ENDLESS HORIZONS



[www.visithughenden.com.au](http://www.visithughenden.com.au)